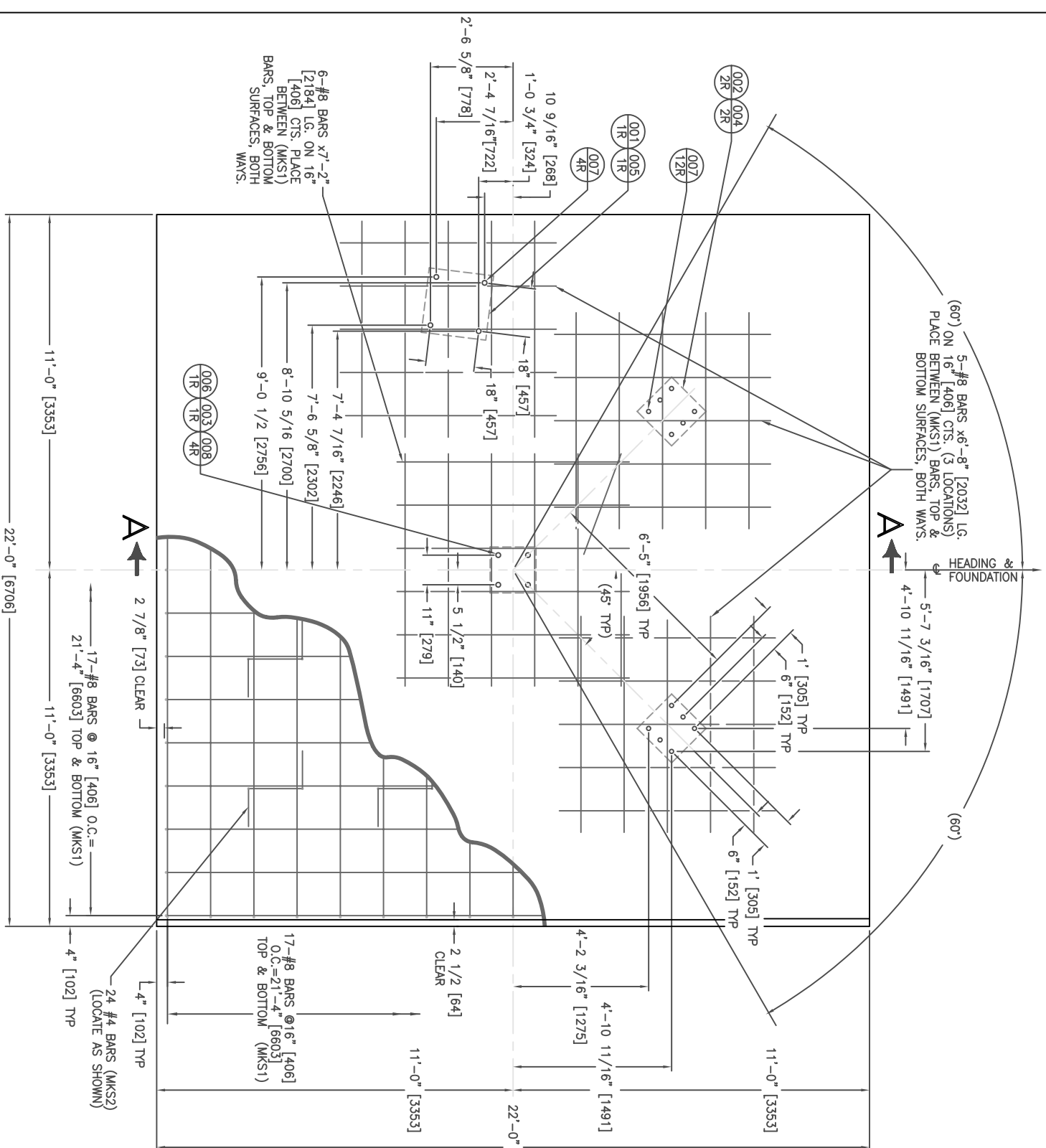
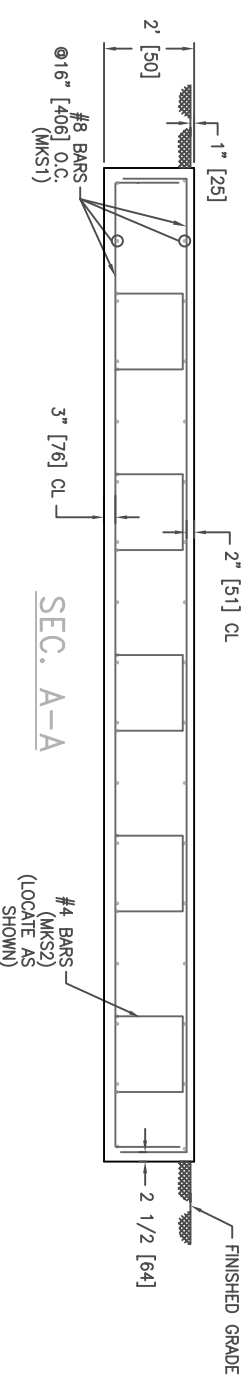


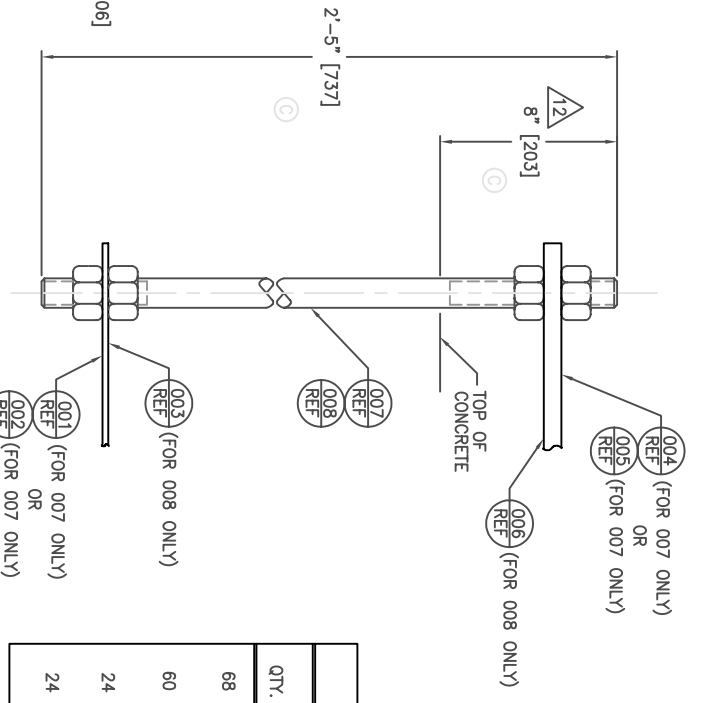
(60°) ON 16" [406] CTS. (3 LOCATIONS) PLACE BOTTOM SURFACES, BOTH WAYS.



PLAN VIEW
R000371

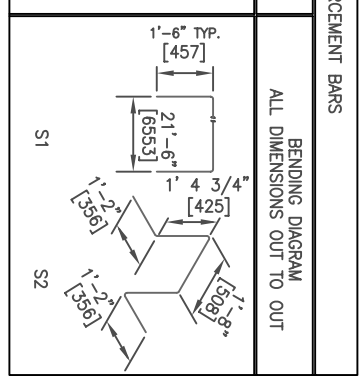


SEC. A-A



ANCHOR BOLT DETAIL
NOT TO SCALE

REINFORCEMENT BARS			
QTY.	SIZE	CUTTING LENGTH	MARK
68	#8	24'-6" [7468]	S1
60	#8	6'-8" [2032]	S2
24	#8	7'-2" [2184]	S1
24	#4	6'-9 1/2" [2070]	S2



- NOTES:
- ALL CONCRETE SHALL HAVE A 28-DAY MIN. COMPRESSION STRENGTH OF 3,000 PSI [20.7 MPa].
 - CONCRETE SHALL BE THOROUGHLY CONSOLIDATED BY EITHER RODDING OR VIBRATING.
 - REINFORCEMENT STEEL SHALL BE DEFORMED INTERMEDIATE GRADE NEW BILLET STEEL BARS WITH 60,000 PSI [414 MPa] MIN. YIELD STRENGTH IN ACCORDANCE WITH SPECIFICATION FOR DEFORMATION OF DEFORMED STEEL BARS FOR CONCRETE REINFORCEMENT (ASTM A-615).
 - ALL REINFORCEMENT BARS SHALL BE SECURELY WIRED TO PREVENT SHIFTING WHEN CONCRETE IS PLACED.
 - THE BASE UNDER THE FOUNDATION SHALL CONSIST OF UNDISTURBED (OR COMPACTED) MATERIAL WITH A MINIMUM BEARING CAPACITY OF 2,000 PSF [957.6 mbor].
 - SURFACE TO HAVE A BROOM FINISH AND BE LEVEL TO THE HORIZON WITHIN ±1/8" [3].
 - WHEN THE FROST-LINE IS BELOW 17" [432], THE SUB-SOIL BASE REQUIRES SPECIAL DESIGN CONSIDERATION TO PREVENT HEAVING.
 - COMPLIANCE WITH ALL BUILDING CODES AND THE REQUIRED PERMITS ARE THE RESPONSIBILITY OF OTHERS.
 - ANCHOR BOLT PATTERNS SHALL BE LOCATED WITHIN ±1/8" [3] OF SPECIFIED LOCATIONS.
 - COMPLIANCE WITH ALL ELECTRICAL CODES AND THE REQUIRED PERMITS ARE THE RESPONSIBILITY OF OTHERS.
 - ESTIMATED QUANTITIES: CONCRETE: 36 CU. YDS [27.5 M³]. STEEL: 6,100 LBS [2767 kg].
 - PROTECT EXPOSED THREADS FROM CONCRETE SPLATTER DURING PLACEMENT OF CONCRETE. REMOVE WOODEN TEMPLATES AND HEX NUTS 24 HOURS AFTER PLACEMENT OF CONCRETE AND CLEAN ALL EXPOSED THREADS.
 - DIMENSIONS [] ARE METRIC (MILLIMETERS).
 - REINFORCED CONCRETE SHALL MEET THE REQUIREMENTS OF CURRENT ACI 318-02 CODE

DO NOT SCALE DRAWING

UNLESS OTHERWISE SPECIFIED, INTERPRET DIMENSIONING & TOLERANCING PER ASME Y14.5M-1994. DIMENSIONS ARE IN INCHES. DIMENSIONS SHOWN IN () ARE FOR REFERENCE ONLY. TOLERANCES ARE: FRACTIONS: .XX ± .05 DECIMALS: .XXX ± .005 ANGLES ± 1'

UNLESS OTHERWISE SPECIFIED, PARTS ARE TO BE SHARP EDGES. COMMERCIAL TOLERANCES TO STOCK SIZES APPLY.

TO CONVERT TO METRIC SYSTEM, MULTIPLY DIMENSIONS SHOWN ON DRAWING BY 25.4 TO OBTAIN MILLIMETERS.

REVISIONS	DESCRIPTION	DATE	APPROVED
A	BBS BASELINE: REVISIONS 8/22/89(D)	12/31/78	CLK/
B	CR66-1436: DELETED ITEMS 008 AND 010	1/16/79	SHV/KCL
C	EC 03-0951: ANCH BOLT: 8" [203] WAS 7 1/2" [191.5] KBN/KLL	1/11/11/03	KBN/KLL
D	1911 A-1-11 1/2" [152.7] WAS 1-11" [584.1]	8/23/70	SHV/GDR

REFERENCE APPROVALS	DATE	APPROVALS
DESIGN	12/31/92	
CHECKED	01/05/93	
DESIGNED	01/05/93	
STRUCTURAL	V/TWU	
ELECTRICAL		

VERTeXRSI CONFIDENTIAL AND PROPRIETARY

VerteXRSI
ANTENNA PRODUCTS DIVISION
KILGORE, TEXAS 75682 USA

FOUNDATION INSTALLATION
±P60° AZ TRAVEL, 125 MPH WIND
MODEL 8.1/9.0 KPC/KPK

CODE ID NO. 98230
SIZE D
DRAWING NO. 000386
SCALE: 1/25
CONTRACT NO.
SHEET 1 OF 1