



## CODICO® NMS-4000 Broadcast Headend Network Management System



The easy-to-use NMS-4000 Network Management System manages, monitors and controls digital video processing systems that include Scopus and 3rd party elements, at one or multiple headends

### Applications

- Satellite distribution
- Distributed Telco topologies for content aggregation & distribution
- IP based headends for cable and satellite
- Contribution over Telco
- Direct to Home: Cable, satellite and IPTV
- Business TV

### Product Highlights

- Fully supports Scopus encoders, multiplexers and decoders
- Supports matrices, modulators and switches
- Provides full IP headend solution: receiving, local encoding, processing & transmission
- Provides graphical view of all system components
- Drill-down of multisystem management graphical view
- Distributed client-server architecture
- Centralized alarm monitoring, filtering and logging
- Supports 1+1, 1:1 and M:N redundancy schemes for ASI and IP operations
- Over-the-air software and parameters download for IRD's / STB's
- SNMP protocol for northbound systems and external management

### Business Benefits

Provides comprehensive, cost-effective management of digital video system networks

Enables centralized management of multiple sites

Supports remote management of one or more sites

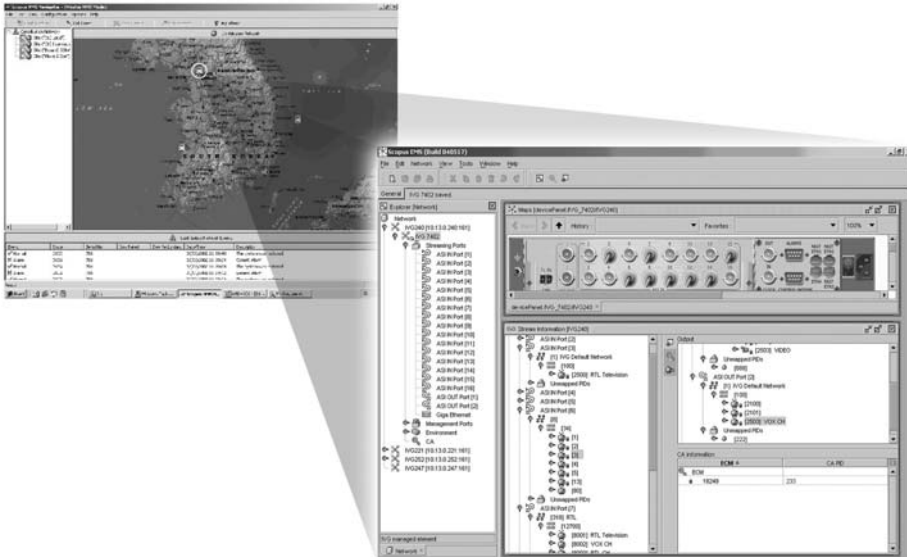
IP headend technology boosts processing and service flexibility and reduces costs

Graphical network display provides instant overview that eases management task

Advanced and automatic redundancy scheme ensures high service availability

Over-the-air control and software download for fast, cost-effective upgrades

Customizable to meet individual operator needs



# CODICO® NMS-4000 Product Specifications

## Interfaces

- 512 MB RAM
- Windows 2000 on either rack mount or desktop PC
- 10/100baseT
- Serial (RS232, RS485)
- Dry contacts (GPI)

## Protocols

- SNMP, Ethernet, TCP/IP, UDP, FTP

## Device

- All CODICO® portfolio
- IVG series, product line
- UE-9000 encoding platform family
- IRD-2900, product line

## Management

- Matrixes: Analog, Digital, ASI, RF, IF
- Switching Matrix Devices: (QAM, QPSK)
- ATM interface unit
- IP switches

## Redundancy

- Manual, Automatic, 1:1, N:M, internal protection

## Security

- Three user access authorizations
- Dynamic user authentication

## Configurations

- ASI based headend - multi channel setup comprised of all elements with different redundancy options
- IP Based headend - comprehensive management tool for IP based headend with different redundancy options
- Distributed architecture - multiple sites with one central management
- Remote Management – special software for allowing management of any of the above configurations from a remote location
- Over-the-air control – special software add-on for allowing S/W download and parameter change of IRD's and STB's
- Bandwidth management – allows optimal usage of the multiplexer output rate

## Americas

Tel:+1 609 9878090  
Fax:+1 609 9878095  
www.scopus.net  
info\_us@scopus.net

## Argentina

Tel:+54 11 52354565  
www.scopus.net  
info@scopus.net

## Brazil

Tel:+55 12 39239208  
www.scopusbrasil.com.br  
scopusbrasil@scopusbrasil.com.br

## China

Tel:+86 10 65880035/6/7  
Fax:+86 10 65880039  
www.scopus.cn  
info@scopus.cn

## India

Tel:+91 22 67939291  
Fax:+91 22 67939299  
info@scopus.net

## Israel

Tel:+972 3 9007777  
Fax:+972 3 9007888  
www.scopus.net  
info@scopus.net

## Japan

Tel:+81 3 57787073  
Fax:+81 3 57176092  
info-japan@scopus.net

## Russia

Tel:+7 495 7893580  
Fax:+7 495 7893579  
www.scopus.ru  
info@scopus.ru

## Thailand

Tel:+66 107433485  
info@scopus.net

## UK

Tel:+44 208 6106038  
Fax:+44 208 6106818  
info@scopus.net

## Professional Services: (Tech Support)

Tel:+972 3 9007800  
Fax:+972 3 9007866