



CODICO® IRD-2600

Professional MPEG-2, DVB Integrated Receiver Decoder

General

The CODICO® IRD-2600 is a professional receiver decoder rich in variety of video, audio and customizable options, based on MPEG-2 and DVB standards, ensuring an interoperable solution for the professional broadcaster.

Applications

- Digital Turnaround
- CATV Headend distribution
- Satellite, Telecom distribution
- DVB-CI Decryption for Transport Stream re-multiplexing
- ASI DVB interface for: Transport stream monitoring, re-multiplexing and Decoder cascading

Features and Options

- 4:2:0 MP@ML
- ASI Transport Stream input or output (option)
- Configured and controlled through front panel, terminal and remote control unit
- VBI for Re-Insertion in Composite and SDI
- DVB Subtitling
- Redundancy support, GPI
- SDI, AES/EBU output (option)
- Enhanced DVB Monitoring Features
- Embedded Audio in SDI and Re-insertion of VBI
- OSD (On Screen Display) on 2 video outputs or on monitoring output only, providing one uninterrupted broadcast video and one for diagnostics and monitoring
- Dolby Digital (AC-3) LT/RT Downmixing (option)
- Dolby Digital (AC-3) Pass-Through (option)

DVB Common Interface (2 Slots)

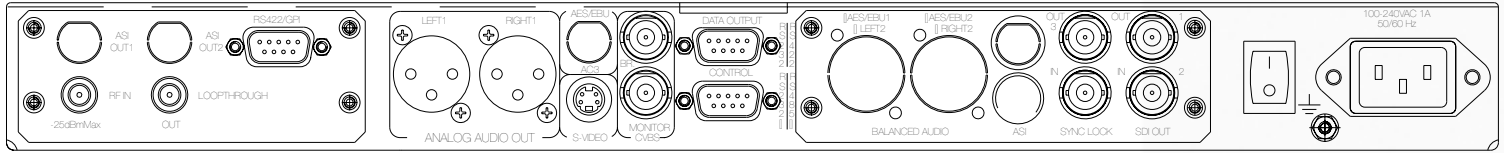
Selected Program Decryption
of leading CA Systems

BISS Mode-1 and BISS-E (DSNG-CA)

Variety of front-end options:
QPSK, 8PSK, 16QAM, QAM, G.703,
STM-1/OC-3, DS3

High and Low Speed Data outputs

Russian SECAM



Decoder Inputs	RS-422 Clock/Data Input	DVB-ASI with Loop-through (optional)
		<ul style="list-style-type: none"> Interface: Copper or Optical fiber TS bit rate: Up to 80 Mbps
Receiver Input Options	<p>DVB Satellite - QPSK</p> <ul style="list-style-type: none"> Frequency range: 950 - 2150 MHz Symbol rate range: 1 - 45 Msym/s L-Band RF input with LNB Control and Loop-through output <p>DVB DSNG - 8PSK, 16QAM and QPSK</p> <ul style="list-style-type: none"> Frequency Range: 950-2150 MHz Symbol rate Range: 1 - 45 Msym/s 2 L-Band inputs with LNB Control <p>DVB Cable - QAM</p> <ul style="list-style-type: none"> QAM demodulation: 16/32/64/128/256 VHF/UHF input: 50.5 – 858 MHz Symbol Rate Range: 1- 7 Msym/s 	<p>Telecom G.703</p> <ul style="list-style-type: none"> Unframed PDH Data rates: E1, E2 or E3 FEC (optional): DVB-C FEC Loop-through output <p>DVB-PDH</p> <ul style="list-style-type: none"> Interface: ATM AAL-1 Data rates: DS3 or E3 Loop-through output <p>DVB-SDH SONET</p> <ul style="list-style-type: none"> TS bit rate: up to 58 Mbps Interface: STM-1/OC-3, ATM AAL-1 Optical interface types: SM or MM, 1300 nm Loop-through output
Outputs	<p>Video</p> <ul style="list-style-type: none"> Analog video Interfaces: 2 composite, 1 S-video Digital video Interfaces (optional): 2x SDI, with embedded VBI and up to 2 stereo channels Video formats: PAL-B/G/I/M/N/D, NTSC, SECAM L/B/G/K1 Russian Secam D/K (optional): in composite only Decoding: 4:2:0MP@ML (1.5 - 15 Mbps) Video resolution interpolation: Pan Scan, Letter box or Pass-through Aspect ratio: 4:3/16:9 and 14:9 Graphic processing: OSD, DVB Subtitling, EBU (Teletext) Subtitling OSD only on monitoring output (optional) Sync Lock Input and Loop-through output (optional) <p>VBI Re-Insertion</p> <ul style="list-style-type: none"> In Composite video and embedded in SDI WST Teletext and inverted Teletext WSS, VPS, VITC, SMC, CC, AMOL (optional) Enhanced VITS with built-in generator 	<p>Audio</p> <ul style="list-style-type: none"> Analog Audio: up to 2 stereo pairs Balanced or 1st Unbalanced (optional) Digital Audio (optional): up to 2 AES/EBU-SPDIF Embedded in SDI (optional): up to 2 stereo Mode: stereo, joint stereo, dual channel, single channel Max output level: +24 dBu analog, 0 dBFS digital Gain Control: -58 to +6 dB / mute Dolby Digital (AC-3) LT/RT Downmixing (option) Dolby Digital (AC-3) Pass-Through (option) <p>Data</p> <ul style="list-style-type: none"> Low Speed Data: RS-232 up to 115.2 Kbaud or RS-422 (optional) up to 2Mbps High Speed Data: RS-422 up to 20 Mbps <p>Transport Stream Outputs (options)</p> <ul style="list-style-type: none"> 1st and 2nd ASI (optional): - Copper - Input stream with selected program decrypted 3rd ASI (optional): - Copper or optical - Input stream or Loop-through
Conditional Access	<p>DVB-Descrambling</p> <ul style="list-style-type: none"> BISS Mode-1 BISS-E CAS-5000 	<p>DVB-CI</p> <ul style="list-style-type: none"> Interface: 2 CI slots - EN-50221 CA method: Multicrypt, Simulcrypt CAS: Irdeto®, Viaccess®, Cryptoworks®, Conax®, Nagravision®, MediaGuard®, VideoGuard®, CODICrypt®
Control and Monitoring	<p>Local</p> <ul style="list-style-type: none"> Extensive Front Panel Control Up to 140 stored setups (optional for 340) Advanced satellite scanning Can operate in Service and in PID modes GPI dry contacts for various status and faults <p>Over The Air</p> <ul style="list-style-type: none"> Control and Software download 	<p>Remote</p> <ul style="list-style-type: none"> PC via RS-232 or RS-485 Software download SNMP proxy PC software (optional) <p>Enhanced DVB Monitoring</p> <ul style="list-style-type: none"> Front panel display: signal quality, Eb/N0, BER, ASI format, network and service information, CA information, CI slots, video and audio decoded information OSD: PSI tables, receiver and decoder status information
Physical Details	<ul style="list-style-type: none"> 1RU (19" rack): 1.75"×19"×12.8" 4.4 × 48.2 × 32.5 cm Operation: 0°C - 50°C ; 5% - 85% non-condensing Certification: CE / FCC / UL 	<ul style="list-style-type: none"> Weight: 2.5 Kg / 5.5 lbs Voltage: 100-240 V AC, 50/60Hz -48VDC (optional) Power consumption: 50Watt max

Corporate Office
Scopus Network Technologies Ltd.
 10 Ha'amal St., Park Afek
 Rosh Ha'ayin, 48092, Israel
 Tel: +972 3 9007777
 Fax: +972 3 9007888

AMERICAS
Scopus Network Technologies Inc.
 100 Overlook Center Drive
 Princeton, New Jersey 08540
 Tel: +1 609 987 8090
 Fax: +1 609 987 8095

CHINA OFFICE
Scopus Network Technologies, China
 Suite 1912, Tower A, Henderson Center
 No. 18 Jianguomennei Avenue
 Dongcheng District
 Beijing 100005, China
 Tel: +86 10 651 87701/2/3
 Fax: +86 10 651 87704

REPRESENTATION OFFICES
Brazil
 Tel: +55 12 9121 1092
 Fax: +55 12 3923 9208

Germany
 Tel: +49 69 9500 2255
 Fax: +49 69 9500 2266

India
 Tel: +91 22 5593 9291
 Telefax: +91 22 5593 9299

Mexico
 Tel: +52 55 1952 1396
 Fax: +52 55 5868 5329

Russia
 Tel: +7 095 789 3580
 Fax: +7 095 789 3579

Singapore
 Tel: +65 6778 2501
 Fax: +65 6773 2628

UK & Scandinavia
 Tel: +44 208 610 6038
 Fax: +44 208 610 6818

E-mail: info@scopus.net
www.scopus.net

CODICO® is a registered trademark of Scopus Network Technologies Ltd. in Israel, USA, Germany, UK, France and Japan. All rights reserved. Specifications and product availability are subject to change without notice. Specifications and feature sets are for technical information only and are not legally binding. For ordering information, refer to Scopus current price list.

"Dolby Digital" is a trademark of Dolby Laboratories, USA.

