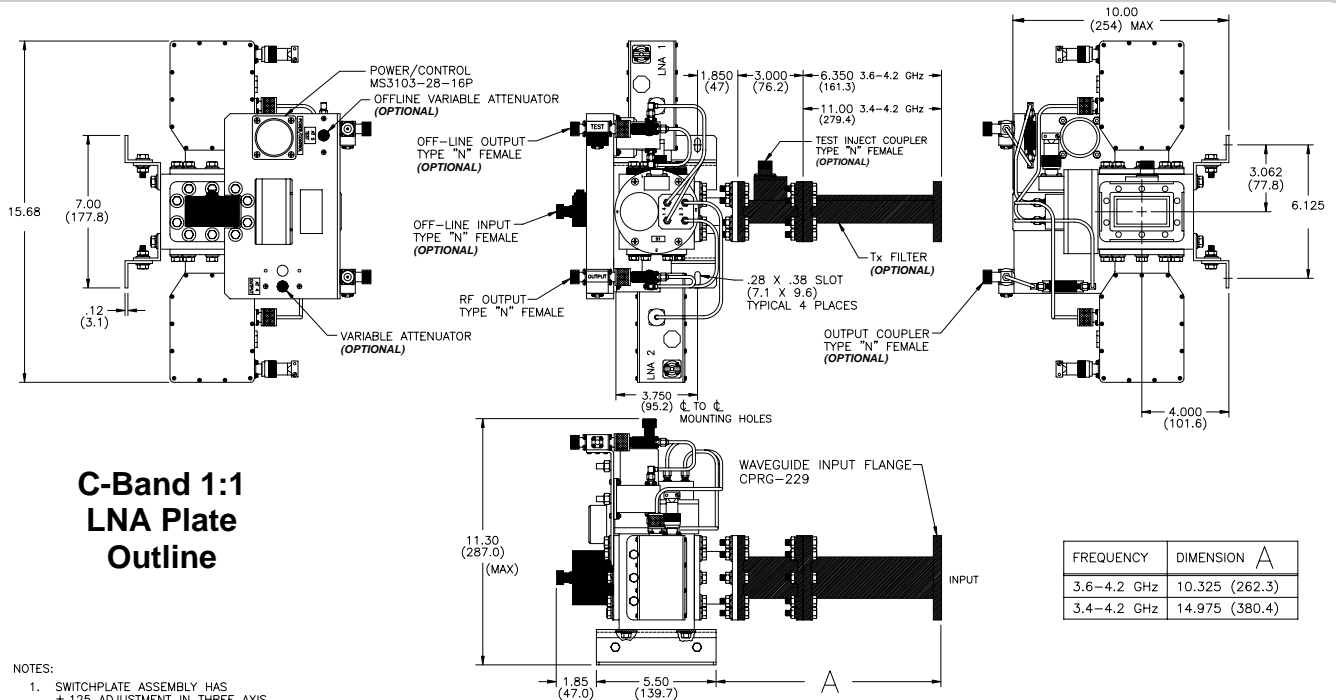


Redundant LNA Systems C-Band



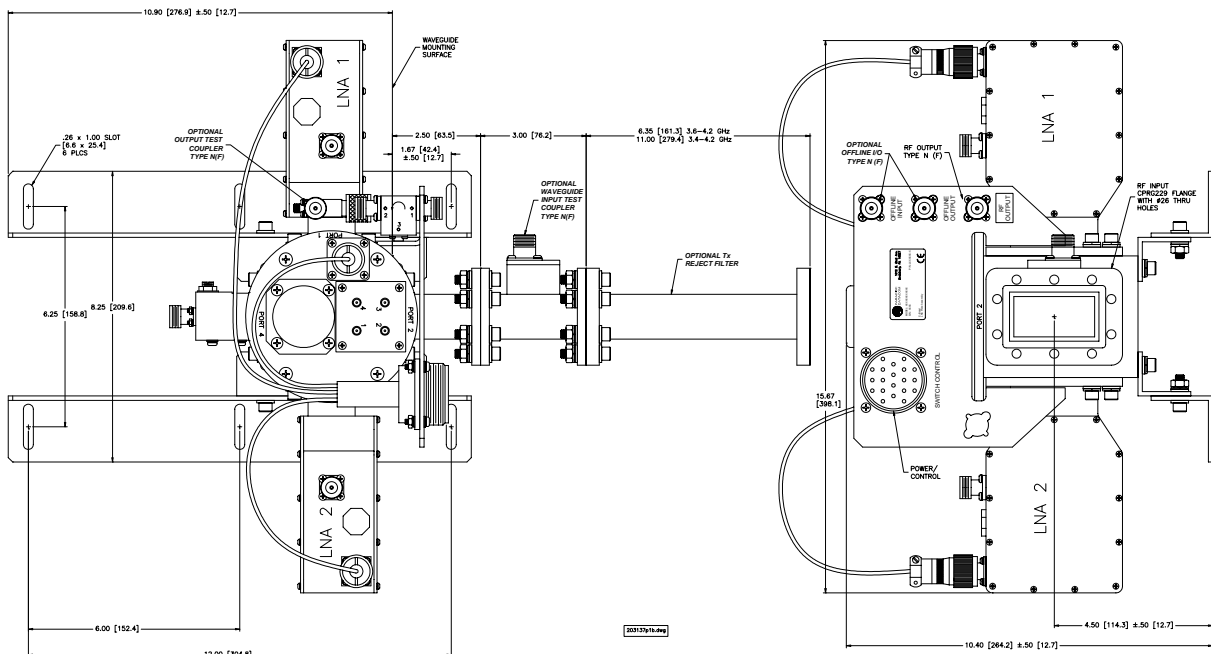
C-Band 1:1 LNA Plate Outline

NOTES:

1. SWITCHPLATE ASSEMBLY HAS ± 0.125 ADJUSTMENT IN THREE AXIS.
2. ████████ SHADED COMPONENTS INDICATE SYSTEM OPTIONS.
3. CUSTOM PLATE CONFIGURATIONS ARE AVAILABLE (CONTACT FACTORY)
4. (XXX) DIMENSIONS ARE IN mm.

19450p1g.dwg

C-Band 1:1 LNA Compatible Plate Outline (XM Option)



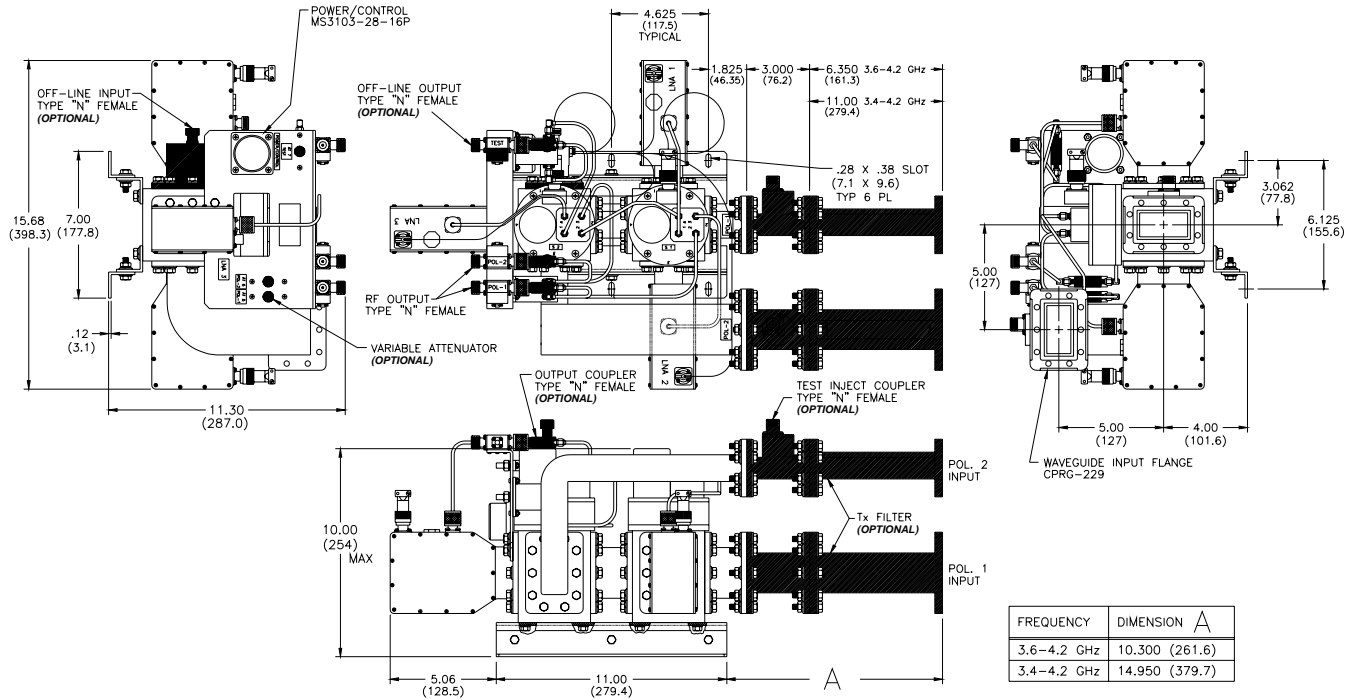
Paradise Datacom LLC
328 Innovation Blvd.
State College, PA 16803

www.paradisedata.com

Phone: (814) 238-3450
Fax: (814) 238-3829
Email: sales@paradisedata.com

Redundant LNA Systems C-Band

C-Band 1:2 LNA Plate Outline

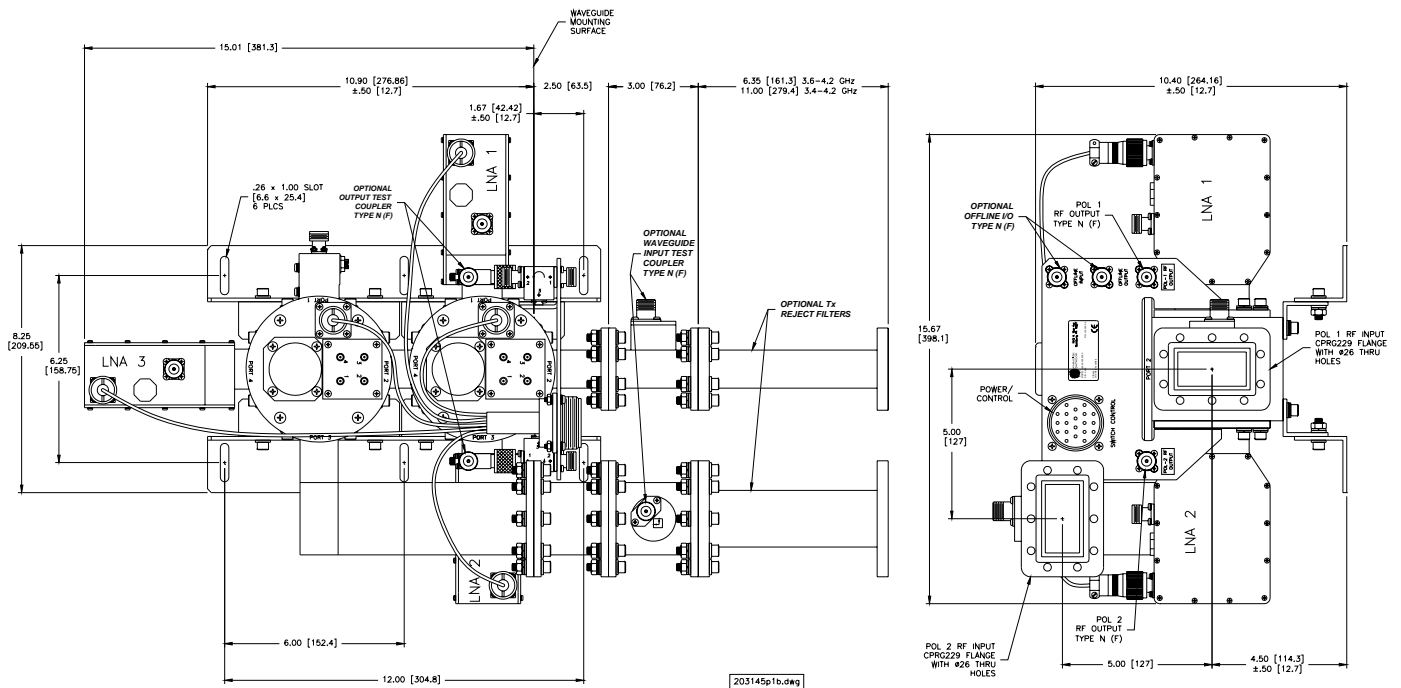


NOTES:

1. SWITCHPLATE ASSEMBLY HAS ± 0.125 ADJUSTMENT IN THREE AXIS.
2. ████████ SHADED COMPONENTS INDICATE SYSTEM OPTIONS.
3. CUSTOM PLATE CONFIGURATIONS ARE AVAILABLE (CONTACT FACTORY)
4. (XXX) DIMENSIONS ARE IN mm.

19444p1g.dwg

C-Band 1:2 Compatible LNA Plate Outline (XM Option)



203145p1b.dwg

Redundant LNA Systems C-Band



System level equipment

Description	Quantity per System		Notes
	1:1 LNAC	1:2 LNAC	
Antenna hub-mount plate assembly	1	1	1:1 system includes 1 ea. dual waveguide-coaxial protection switch. 1:2 system includes 2 ea. dual waveguide-coaxial protection switch.
RF-3000 series C-band LNAs	2	3	Customer specified noise temperature and gain
Redundant control panel RCP-1100 (1:1) RCP-1200 (1:2)	1 -	- 1	
Interface control cable	1	1	100 ft. (30 m) standard Customer specified up to 1000 ft. (300 m)
Operations manual	2	2	
Standard test data	1 lot	1 lot	Customer specified special testing available

System level performance

Parameter	System Performance *			with Option(s)
	1:1	1:2		
		Pol. 1	Pol. 2	
System Noise Temperature Contribution (above LNA noise temperature)	2 K 4 K 10K 3 K 5 K 11K	2 K 4 K 10 K 3 K 5 K 11 K	4 K 6 K 12 K 5 K 7 K 13 K	None Tx Filter (3.6 - 4.2 GHz) Tx Filter (3.4 - 4.2 GHz) Input Test Coupler Tx Filter (3.6 - 4.2 GHz) and Input Test Coupler Tx Filter (3.4 - 4.2 GHz) and Input Test Coupler
System Noise Temp. v Ambient Temp. (approximate)	0.37 K/°C	0.37 K/°C	0.37 K/°C	Option-independent
System Gain v Ambient Temp. (approximate)	- 0.05 dB/°C	- 0.05 dB/°C	- 0.05 dB/°C	Option-independent
System VSWR				
Input				
on-line RF thru-paths	1.3:1	1.3:1	1.3:1	
off-line & coax. coupled input ports	1.5:1	1.5:1	1.5:1	
Output				
all RF output ports	1.25:1	1.25:1	1.25:1	

Redundant LNA Systems C-Band



System Configurator

L	N	1	C														
---	---	---	---	--	--	--	--	--	--	--	--	--	--	--	--	--	--

Output Frequency
C - C-Band

System Configuration
1 - 1:1 Redundant
2 - 1:2 Redundant
3 - Dual 1:1 Redundant

Number of LNAs in System
0, 1, 2, 3, or 4

LNA Frequency Band
A - 3.7 - 4.2
B - 3.4 - 4.2
C - 3.6 - 4.2
D - 3.625 - 4.2
E - 4.5 - 4.8
Z - N/A

LNA Gain
1 - 50
2 - 60
3 - 65
4 - 70
9 - N/A

Special Options
XX - None
XM - Compatible Plate Assembly

Cables
X - No Cables
A - 100 ft. Control Cable
D - 150 ft. Control Cable
Z - Custom Control Cable Length

Offline & Test Ports
0 - None
1 - Offline
2 - 30dB Test Input
3 - Offline & 30dB Test Input
4 - 40dB Test Input
5 - Offline & 40dB Test Input

Controller
0 - None
1 - RCP2-1100
2 - RCP2-1200
3 - RCPD-1100
4 - RCP2-1100, 48VDC
5 - RCP2-1200, 48VDC

Tx Reject Filter
0 - No
1 - Yes

LNA Noise Temperature
Freq. Band B A - 34 B - 35 C - 40
Freq. Band A,C,D D - 30 E - 35 F - 40
Freq. Band E G - 40 H - 45
Z - N/A