



GENERAL HIGHLIGHTS

The Media Router ASI (CME-5200) enables IP-based multimedia (video, audio and data) content to be delivered over a high-speed ASI link and distributed to remote devices connected to the MR via an Ethernet LAN.

FEATURES

- ASI to Ethernet delivery over MPEG/DVB networks
- Support for section packed and interleaved transport streams
- Compliant with EN 301 192 streams

RELIABLE OPERATIONS

- No hard drive. All firmware boots from Flash resulting in no moving parts
- High availability product
- Embedded CPU and eCOS operating system
- Make changes on the fly without the need for a reboot.
- Over 100,000 MTBF

APPLICATIONS

- IP Multicasting
- Fast Internet / intranet
- Streaming audio / video
- Business TV, training, e-learning, or live events
- Multicast file transfer
- Supports transport stream over IP

EASE OF USE

- Configuration options: Terminal, HTTP or Tel-net
- SNMP MIB II & Private MIB

INVESTMENT PROTECTION

- Upgrade MR firmware via remote download from head end
- Upgrade firmware individually via TFTP

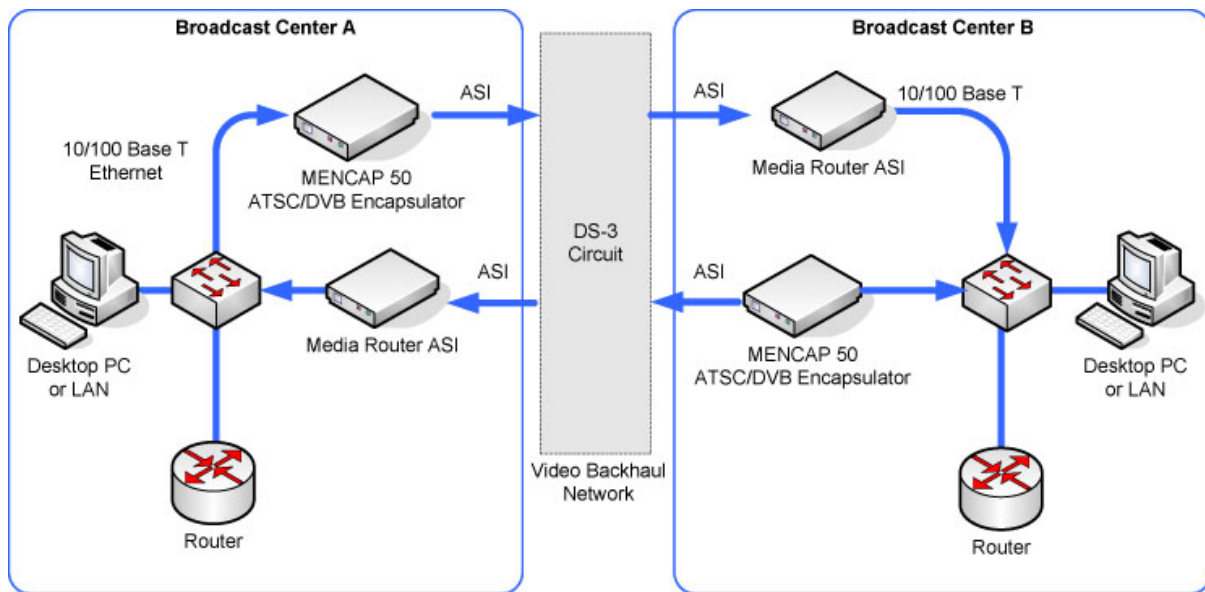
COMPLIANCE

- DVB Data Broadcasting (EN 301 192)
- ATSC Data Broadcasting (A/90)
- ASI (EN50083-9)
- MPEG2 (ISO/IEC 13818-1)
- Ethernet 10/100 BaseT (IEEE 802.3u) • IGMP V3 Support

DISPLAY LEDs

- Power (Blue)
- Ethernet Activity (Green)
- Ethernet Link (Green)
- MPE Activity (Green)
- Alarm (Red)

CME-5200 Media Router ASI



PHYSICAL & POWER

- 1 RU High
- Length=8 1/8"
- Width= 7 1/4"
- Height= 1 3/4"
- Power Consumption: 6.3 W Max
- Input Voltage: Universal 100-240VAC 47Hz-63Hz
- desktop power supply to 5VDC @ 2.5 A

ENVIRONMENT

- Operating Temperature: 0° to 40°C
- Storage Temperature: -30° to 65°C
- Humidity: 10% to 75% non-condensing

CONNECTORS

- RJ-45: 10/100BaseT Ethernet Interface (IEEE 802.3u)
- BNC: DVB-ASI Primary Input
- RJ-12: Terminal (RS-232)
- RJ-12: Aux Port for Serial Control

OPTIONAL EQUIPMENT

- Rack Mount Shelf: (TR-1600)
 - 1 RU 19" rack-mount shelf can house one or two CME-5200 units

