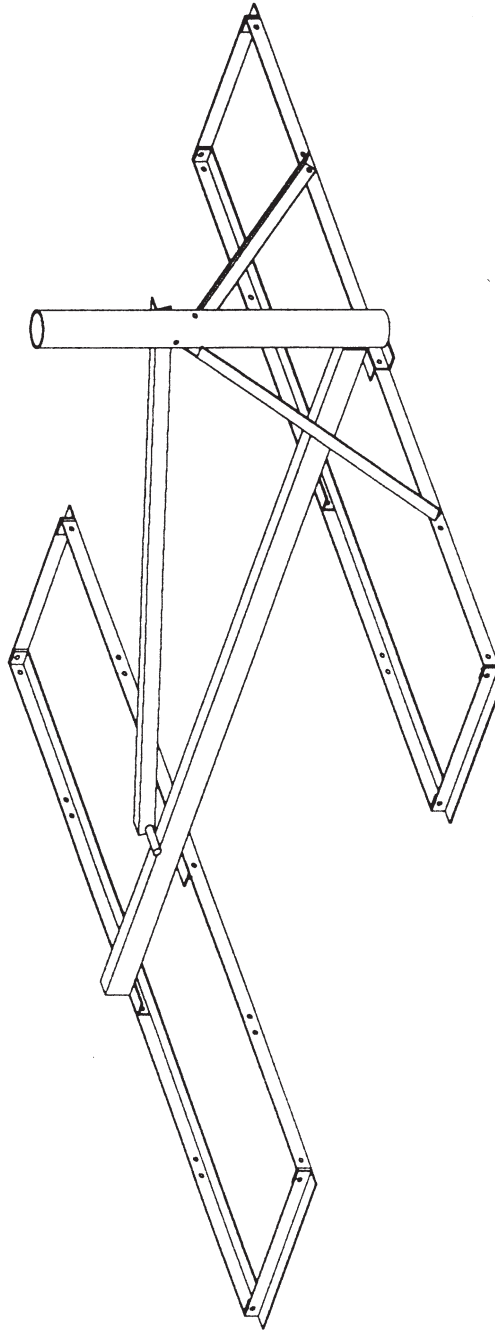


BAIRD Non-Penetrating Support System

MODEL: B4-6x6

The B4-6x6 is a non-penetrating antenna support designed to handle an 1.2M antenna. The simple design of the B4-6x6 makes the unit an easily installed, cost-effective mounting system.





PRODUCT SPECIFICATIONS

MODEL: B4-6x6

Non-Penetrating, flat roof antenna supporting system.
Handles up to and including a 4' (1.2M) antenna.
Ku and C band-transmit and receive.

Footprint - 6.25' x 6.00' = 37.5 sq.ft.

Finish - Hot dip galvanized

Mast Diameter - as required up to 3-1/2 O.D.

Mast Height - 3' max. (for most installations)

The mount is also available with an expanded footprint.
The B4-6x8.6 has two additional trays to hold more ballast and distribute the load over a larger area.

Footprint - 6.25' x 8.67' = 54.2 sq.ft.

Finish - Hot dip galvanized

Mast Diameter - as required up to 3-1/2 O.D.

Mast Height - 3' max. (for most installations)

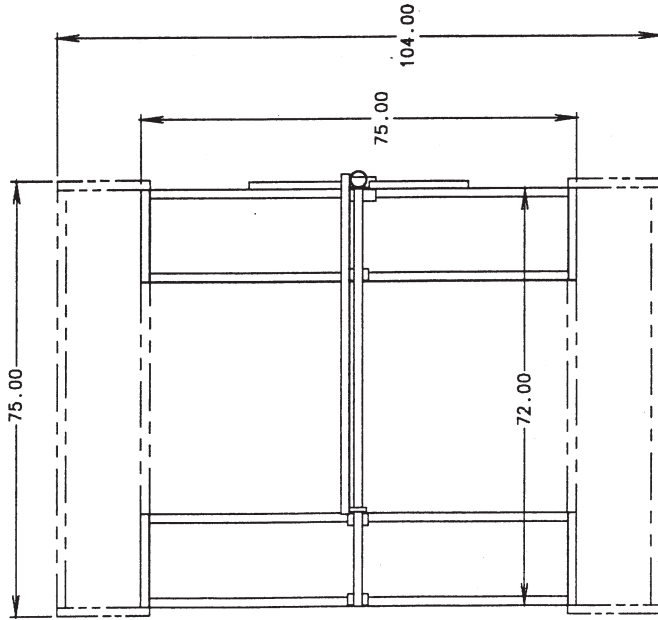
Ballast required will be recommended based on antenna diameter, type and survival requirements.

It is the customer's responsibility to see that all applicable codes are satisfied. It is suggested that a structural engineer review the application of this product.

An engineering report is available to assist with determining the proper amount of ballast.

A pad can be supplied to isolate the mount from the roof surface.

Under extreme wind conditions the mount should be tethered with cable.



PHANTOM LINE REPRESENTS THE TWO TRAYS USED TO EXPAND THE B4-6x6 TO A B4-6x8.6

