

Ku Band Series*

	Transmit Output	Receive Input
Standard Ku band	14.00 – 14.50 GHz	10.95 – 12.75 GHz
Extended Ku band	13.75 – 14.25 GHz	10.95 – 12.75 GHz
Super Extended Ku band	13.75 – 14.50 GHz	10.95 – 12.75 GHz

TX Instantaneous bandwidth: ±18MHz
 RX Noise Figure: 1.9dB (160K) MAX—Other options available
 Ports: 1 RS-232 and 1 RS-485/RS-232 configurable

C & Ku band 1+1 Redundancy Protection Switch

TX and RX Independent / Serial port for Remote Control
 Only a single RS-232 or RS-485 interface cable required to interface to indoor computer



Protection Switch



Ku band 0 dBm

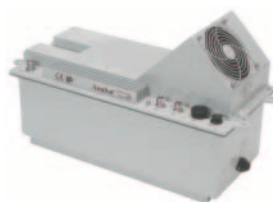


Ku band 2W and 4W

AnaSat® Product (Watts)	Compression Point (dBm)	TX Gain (dB)	Prime Power Recommendation (VA)	Weight (lbs)
0 dBm	0	31	100	22
2W	33	64	175	26
4W	36	67	225	27
8W	39	70	400	28
16W	42	73	690	37
20W	43	74	700	40
23W	43.6	75	710	40
25W	44	75	720	40
40W	46	77	1690	67
50W	47	78	1768	67
60W	47.8	79	1876	67
80W	49	80	3181	123
100W	50	81	3557	123
125W	51	82	3654	123



Ku band 8W



Ku band 16W, 20W, 23W and 25W



Ku band 40W, 50W and 60W